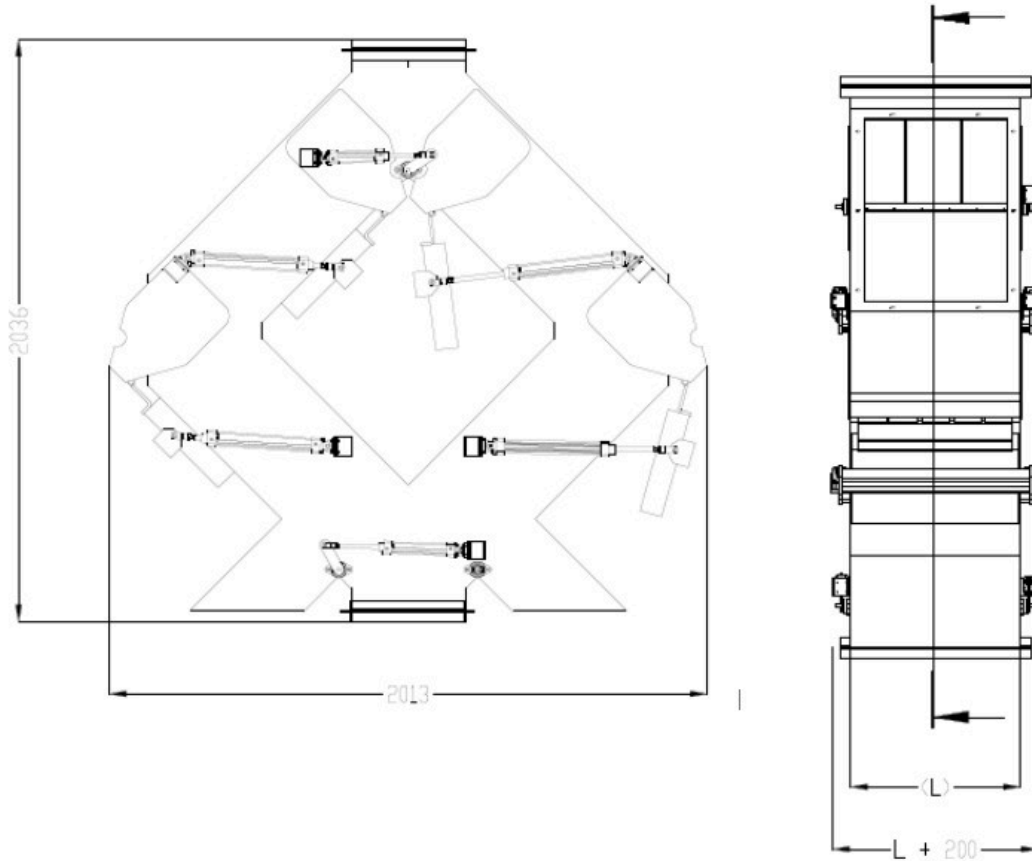


# Datasheet MSK-AC 550 F



Model	Dimension "L" (mm)	Flow capacity (m <sup>3</sup> /h)
MSK-AC 165 F	140	45
MSK-AC 250 F	200	85
MSK-AC 390 F	260	130
MSK-AC 550 F	340	195
MSK-AC 800 F	430	250

Parameter name	Value
Description:	Cascade magnet with automatic cleaning
Separator placement:	inside of a pipeline
Material flow direction (beginning with the most common one):	vertical

Max. magnetic induction (depending on the type of the separator it is either a magnetic value on the surface of the separator or a magnetic value that is in direct contact with the treated material. Tolerance +/- 10 %:	1300
Connecting dimension, inlet and outlet diameter of the separator (mm):	340
Application (= the material that the application of this separator is suitable for):	bulk material
Separator is suitable also even for the materials of poor bulk properties:	yes
Minimum size of the particles that can be captured by the separator (mm):	1.5
Maximum size of the particles that can be captured by the separator (mm):	100
Separator is suitable for vacuum or pressure conveying lines:	no
Separator is suitable for materials transported by:	pipeline
Separator is able to capture paramagnetic particles:	yes
Separator is suitable for abrasive materials (1 = strongly abrasive, 2 = slightly abrasive, 3 = non-abrasive):	2
Separator is suitable for materials that tend to solidify (the materials must be heated):	no
Separation of non-ferrous metals:	no
Standard requirements for the installation:	electricity supply corresponding with the motor parameters
Cleaning of the separator:	fully automatic cleaning, it is not necessary to interrupt the material flow during the cleaning
Max. operating temperature/ max. temperature of the material (°C):	100
Min. surrounding ambient temperature (°C):	-25
Max. surrounding ambient temperature (°C):	45
Built-in standard magnet type:	ferrite magnet
Material of the sealing:	silicone
Number of magnetic plates (it concerns magnetic cascades only):	3
Maximum capacity. The mentioned capacities are informative and non binding (m <sup>3</sup> /h):	195
Options of the extended anti-abrasion protection:	chemical nickel coating, plastic coating, rubberizing, ceramic lining

Material of the separator body (that is in contact with the treated material):	DIN 1.4301
ATEX:	zone 21, 22
Outer surface treatment of the separator:	sandblasted, partially painted (RAL colour tone)
Inner surface treatment of the separator:	clean steel (no surface treatment)
Magnetic system:	magnetic plate
Connection possibilities of the separator (the variant mentioned as the first is the standard one):	square flange
Standard electrical equipment of the separator:	external electric cable with a plug, pneumatic cylinders, SIEMENS control system
Other additionally paid options (beside the already mentioned options referring to the anti-abrasion protection, motor and connection types):	inner polishing, design for ATEX zone 20
Max. operation time (hours/day):	24
Max. production time for a standard version (if not available in stock) (weeks):	8
Standard packing:	wooden box
Other packing modes (surcharged options):	maritime packing according to clients needs
Warranty (months):	12

The mentioned capacity is only approximative and depends on the type of the cleaned material. This product can be delivered also in other dimensions, in versions with a higher temperature resistance and other kind of magnets etc. upon a special request.